

## SWAN VIEW PRIMARY SCHOOL Allergy Awareness Policy

Our School is a 'Allergy Aware' school. We are committed to providing a safe environment and we aim to protect students who suffer from severe allergies.

Anaphylaxis is a severe, rapidly progressive allergic reaction that is potentially life threatening.

Our School will strive to educate our Community of the risks associated with anaphylaxis .

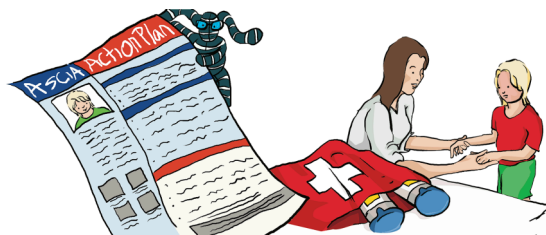


### Allergy Aware versus Allergy Free.

It is not possible to eliminate all food with traces of allergenic foods, such as milk products, egg or nut allergens. So, Swan View Primary School knows it is better for our community to become aware of the risks associated with anaphylaxis and to put in place, age appropriate strategies to minimise exposure to known allergies.

### Action by Parents/Carers

- Parents / Carers must provide information concerning a student with an Allergy in the form of an Anaphylaxis Action Plan (ASCIA from a Doctor) when students are enrolled.
- Parents / Carers are expected to educate the student in the self management of their food allergy. Eg, safe and unsafe food, symptoms of allergic reactions, how and when to tell an adult.
- Parents / Carers must provide bottled drinks and lunch boxes clearly labelled with the name of the child for whom they are intended.
- Inform the school of any changes to emergency contact details.
- Replace the EpiPen before the expiry date.



### Action by Staff Members

- Action Plans for affected Students will be on display in the classroom and First Aid Room.
- Parents will be informed by the teacher if a child with anaphylaxis is in their child's class.
- Allergy products are discouraged in the class and students must wash hands before and after eating.
- The students will be educated about Allergy Awareness.
- There will be no sharing of food, utensils or food containers.
- The use of food in cooking and Science experiments will be thoughtfully considered and restricted when necessary.
- Staff will be aware of cleaning food preparation areas and cooking utensils to prevent cross contamination.
- All staff members are aware of the symptoms and receive First Aid training.

## Responding to an Incident

- 1) Students at risk of anaphylaxis are provided with an EpiPen.
- 2) Staff Trained in the administration of an EpiPen will administer the medication and call an Ambulance and give the EpiPen to the paramedics.
- 3) If the school doesn't have an EpiPen on hand, an Ambulance will be called immediately and First Aid will be commenced.

## After the Incident

- The parents are informed immediately of an episode.
- Staff involved in the incident will complete an 'Incident Report'.
- Students and staff witnessing the anaphylactic experience will be provided with support following any anaphylactic traumatic experience.
- The school will conduct an internal review of response and processes.

## Allergy Aware School



## ALLERGY AWARENESS



---

Swan View Primary School  
380 Morrison Road  
Swan View WA 6056  
Tel: (08) 9257 0400